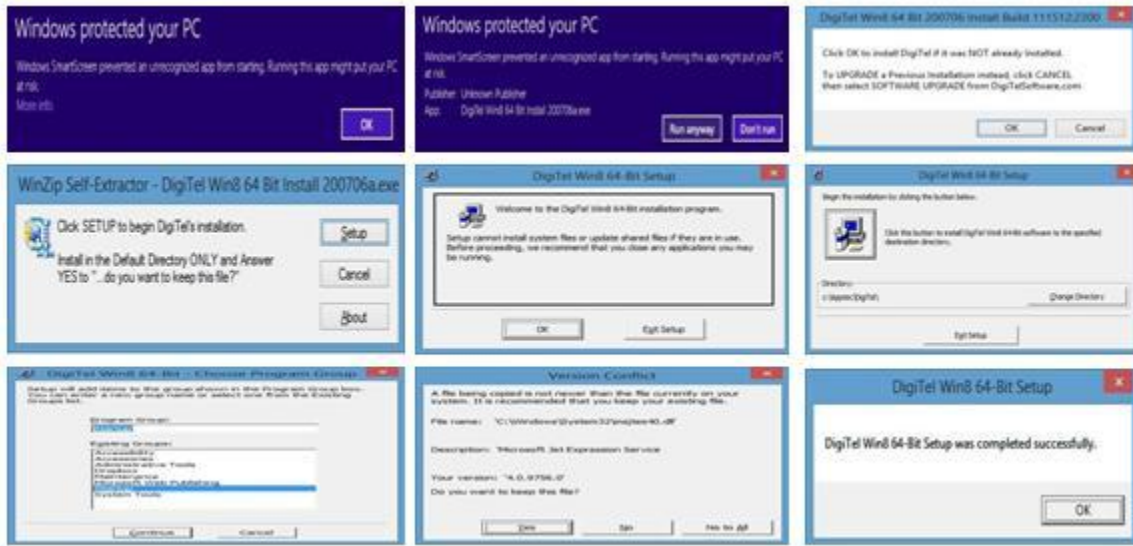


The full **DigiTel User Manual** is available on the CD and at [www.DigiTelSoftware.com](http://www.DigiTelSoftware.com)

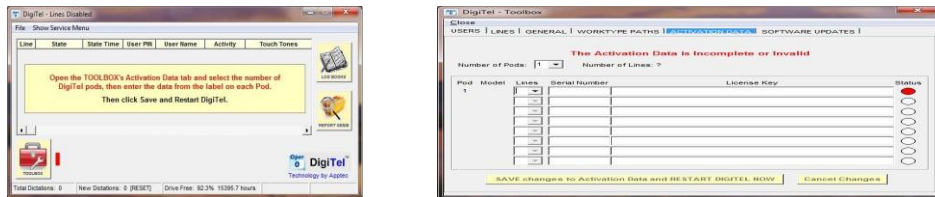
**Quick Installation & Setup :**

- 1** Connect the DigiTel Pod to a USB Port now.
- 2** Run “DigiTel Win8 64-Bit Install” From the CD or from [www.DigiTelSoftware.com](http://www.DigiTelSoftware.com)
- 3** Now follow these instructions as shown below: click “More info”, “Run anyway”, “OK”, “Setup”, “OK”, the “Square PC Picture” (installing in the “c:\Apptec\DigiTel\” directory only), “Continue”, “Yes” if asked “do you want to keep this file?”, and then “OK”.



**4** Now run DigiTel from your Start menu and then **follow the instruction 5 & 6 on the other side of this guide to install the DigiTel Pod driver** →→→→→

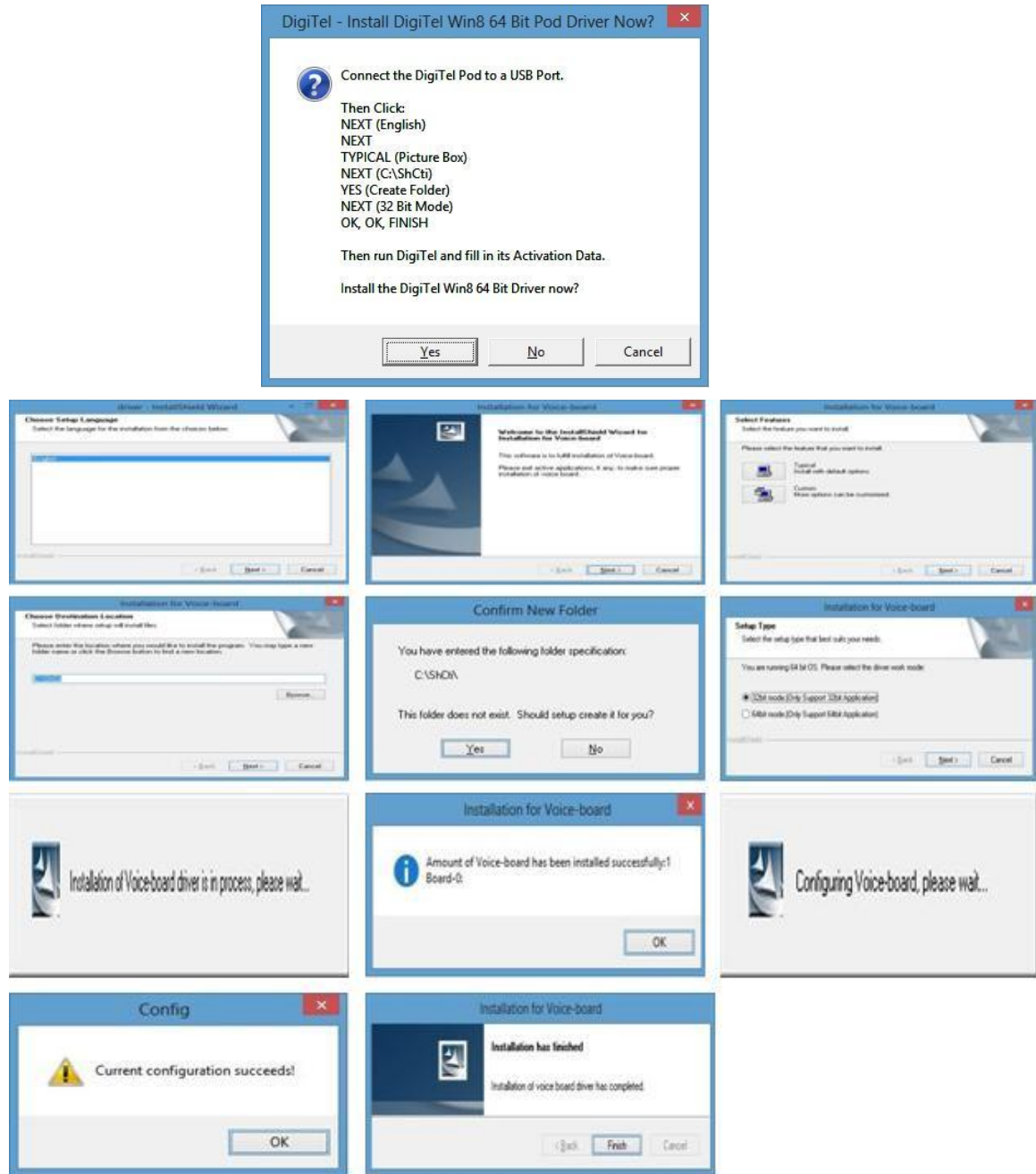
**7** →→→→→ After completing the instructions from the other side of this guide, run DigiTel from your Start menu, open its Toolbox and go to the “Activation Data” tab. Enter the Activation Data from the label on the underside of the DigiTel Pod, and click SAVE and Yes. DigiTel will restart and its green LED will blink... indicating that it is ready for use.



- 8** Next, from the Toolbox’s User tab, select a user, enter a PIN and Name and click SAVE; repeat this for each user.
- 9** Now connect your Analog phone lines and call into DigiTel. DigiTel will greet each user and talk them through the log-in and dictation process.
- 10** Please see the enclosed **Getting Started Guide** and the **DigiTel User Manual** for **very important Computer Power Options settings, PC Maintenance recommendations, Phone Line settings,** and other information to help you get your system set up.

→→→→→ **DigiTel Pod Driver Installation for Windows 8 64-BIT Windows installations:**

**5** When Step 4 of the instructions on the other side of this guide is complete, **run DigiTel from your Start menu and then follow these instructions:**



**6** Now continue with **Instruction Step 7** on the other side of this guide →→→→→

**Note:** If the instructions on this page do not show up when expected, run DigiTel, and then click “Show Service Menu” from its main menu. Then click “Reinstall Pod Driver - Do at next Startup” and then exit and restart DigiTel... then follow the instructions on this page.